



printed on recycled paper

PROPOSITION A

Building For Our Future

LOS ANGELES

COMMUNITY

COLLEGE

DISTRICT

A REPORT TO THE COMMUNITY

FALL 2002



KEY CONTACTS

Fall 2002

Los Angeles Community College District

BOARD OF TRUSTEES

Warren T. Furutani, President
Mona Field, Vice President
Kelly G. Candaele
Georgia L. Mercer
Nancy Pearlman
Sylvia Scott-Hayes
Michael D. Waxman
Mary M. Ramos, Student Trustee

LOS ANGELES COMMUNITY COLLEGE DISTRICT

770 Wilshire Boulevard
Los Angeles, CA 90017
Phone: (213) 891-2000
www.laccd.edu

PROPOSITION A PROGRAM MANAGEMENT

Fred Gans
Program Director
DMJM/JGM
515 South Flower Street
Ninth Floor
Los Angeles, CA 90071
Phone: (213) 593-8429
Fax: (213) 593-8621

DISTRICT ADMINISTRATION

Dr. Mark Drummond
Chancellor
Dr. Peter J. Landsberger
Senior Vice Chancellor
Dr. Mary E. Lee
Executive Director
Facilities Planning and
Development
Camille A. Goulet
General Counsel

DIRECTOR OF COMMUNICATIONS

Lynn Winter Gross
Phone: (213) 891-2423

COLLEGE PRESIDENTS

Dr. Mary Spangler
President
Los Angeles City College
Ernest H. Moreno
President
East Los Angeles College
Dr. Linda M. Spink
President
Los Angeles Harbor College
Dr. Adriana Barrera
President
Los Angeles Mission College
Darroch "Rocky" Young
President
Los Angeles Pierce College
Dr. Audre Levy
President
Los Angeles Southwest College
Dr. Daniel Castro
President
Los Angeles
Trade-Technical College
Dr. Tyree Wieder
President
Los Angeles Valley College
Francisco Quiambao
President
West Los Angeles College

Cover: A dramatic bell tower serves as the entrance to the new Addition to the Instructional Student Services Building at Los Angeles Mission College, creating an architectural landmark.

Fall 2002

Report from the Chancellor



New Facilities. Visionary Master Plans. Improved Learning Environments.

Eighteen months ago, voters made an extraordinarily important decision to invest \$1.2 billion in the future of the Los Angeles Community College District. The passage of Proposition A was pivotal to improving the learning environment for students at our nine campuses.

Our challenge now is to deliver on our campaign promises with real results. I intend to pursue the construction of high-quality projects with the same vigor I pursued the passage of the bond measure, and we will meet our construction goals on time and within budget.

The Proposition A building program is truly a lifeline for our colleges. We know that where we learn can be a significant factor in how we learn. This bond program is about more than buildings. The \$1.2 billion program will modernize our facilities to raise the level of our learning environment for our growing student population.

I have found that the transformation is moving ahead even before the new buildings are going up. There is an air of excitement on our campuses as students, faculty, campus employees and community members see the construction crews demolish old bungalows to replace them with gleaming new buildings. The prospect of green space and state-of-the-art science labs is elevating our school spirit. Our neighbors are relieved as we build more parking facilities for students – truly a win for the communities and our students.

Progress at each campus is gaining momentum daily. Master planning, so critical to shaping the future vision of each college before construction, is under way at all of our campuses and has already been completed at several of our colleges. Each college president has held public meetings to gather information from campus and community stakeholders about their priorities for the new facilities. And, as we aggressively moved forward with the campus planning and pre-design work, we selected top-quality project managers to oversee the work.

The college highlights and updates contained in this publication describe the increased activity on the campuses. Momentum will continue as groundbreakings and ribbon cuttings occur. As always, we continue to solicit public input on our activities. Citizens' oversight committees meet regularly to ensure appropriate spending, and the project managers are ensuring that the work is being done and done right.

As you can see, we are ambitious and we expect tremendous results. I am enthusiastic about our accomplishments so far, and I salute the board members, college presidents, faculty, students and community residents who have joined together to turn this dream into reality.

Mark Diamond

Fall 2002

College Highlights

LOS ANGELES CITY COLLEGE



Dr. Mary Spangler, President, Los Angeles City College, breaks ground on the new Student Admissions Center with faculty, staff and students.

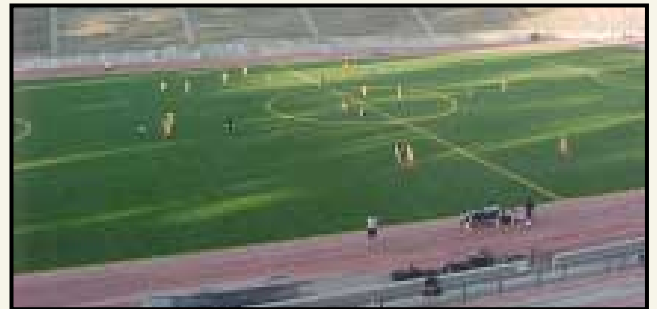
In a ceremonial groundbreaking in August, Los Angeles City College (LACC) unveiled the first phase of a comprehensive campus redesign. Surrounded by students, faculty and community members, College President Mary Spangler provided details for a new \$18 million Student Admissions Center, the first of several projects to be funded by Proposition A.

The new building will replace LACC's existing enrollment facilities with a one-stop admissions center that will provide a seamless point of entry for LACC students.

As part of LACC's \$147 million allocation, LACC officials also announced plans for a wide range of new buildings including a new Math, Science and Technology Building and a new Physical Education/Health Building, Stadium Facilities and other new and renovated facilities.

EAST LOS ANGELES COLLEGE

As part of a comprehensive stadium modernization program, East Los Angeles College completed the installation of a new state-of-the-art synthetic turf system at the campus' Weingart Stadium. The stadium, originally constructed in the 1940s, is the third-largest seating capacity sports venue in the Los Angeles area, second only to the Los Angeles Coliseum and Rose Bowl. The playing surface provides a durable and safe surface for college and community athletic events.



The first women's soccer game is played on new turf at East Los Angeles College's Weingart Stadium.

The entire construction effort, which included the removal of the deteriorating natural grass surface and the installation of a new field drainage system, was completed in time for the College's first women's soccer game.

Fall 2002

College Highlights

LOS ANGELES MISSION COLLEGE



Construction activity at Los Angeles Mission College's Addition to the Instructional Student Services Building. A ribbon cutting to celebrate the completed project took place in October.

The College opened a new student services building in time for the arrival of the new school year. The building is a state-of-the-art admissions and enrollment center. Within the "one-stop" center, students can take advantage of enhanced services for financial aid and expanded counseling, new computer information kiosks and other resources.

The Addition to the Instructional Student Services Building is part of Mission College's \$111 million bond-funded campus redesign and is the first Proposition A construction project to be completed within the Los Angeles Community College District.

LOS ANGELES VALLEY COLLEGE

The College is making room for new, much-needed facilities. One of the original 35 bungalow structures built in the 1950s was demolished in July, making way for the construction of restrooms for faculty, staff and students on campus.

The demolition is one of Los Angeles Valley College's first projects as part of its \$165 million Proposition A bond-funded campus redesign.

Excavation and foundation work has been completed for the temporary swing space for the financial aid and computer science programs. The temporary buildings will be moved onto campus shortly.



"Swing" space arrives for the financial aid and computer science programs at Los Angeles Valley College.

Fall 2002

College Updates

LOS ANGELES CITY COLLEGE

Proposition A Allocation: \$147 Million

The master plan and environmental impact report for Los Angeles City College have been approved by the Los Angeles Community College District Board of Trustees.

Programming for the Math, Science and Technology Building and the Physical Education/Health Building with the Athletic Field and Parking Lot was presented to the Accreditation and Planning Committee of the Board of Trustees and was approved for compliance with the Board's sustainable building policies.

EAST LOS ANGELES COLLEGE

Proposition A Allocation: \$172 Million

In keeping with the board-approved master plan and environmental impact report for East Los Angeles College, three major projects are being programmed: the Women's Gymnasium Entry Plaza, the Language Arts Building and the Stadium Addition.

Significant projects currently in the design phase include the Maintenance and Operations Facility, restroom modernizations and campus fire alarm improvements.

The selection process for architects/engineers is under way for two parking structures, renovation of the Administration Building and construction of a new Fine Arts/Performing Arts Center.

LOS ANGELES HARBOR COLLEGE

Proposition A Allocation: \$124 Million

Both master plan and environmental impact report activities are under way. Campus-wide programming efforts are ongoing, and several projects have been identified for renovation including the Theater/Drama/Speech Building, Music Building, Fine Arts Building and Nursing Building.

Upgrades to the campus-wide telephone system have been completed. A design firm has been retained to establish campus-wide standards for landscaping, way-finding, lighting and exterior finishes.

LOS ANGELES MISSION COLLEGE

Proposition A Allocation: \$111 Million

The final draft of the master plan for Los Angeles Mission College has been published and is being circulated for review and public comment. Studies associated with the environmental impact report include traffic, public transportation, geotechnical issues and hydrology.

Numerous activities associated with potential land acquisition opportunities are under way including appraisals, data gathering, stakeholder meetings and conceptual land use studies.

The Addition to the Instructional Student Services Building and the Campus Clock Tower were completed, and the building is occupied by faculty, staff and students.

LOS ANGELES PIERCE COLLEGE

Proposition A Allocation: \$166 Million

The draft environmental impact report is being reviewed for comment and is scheduled for presentation to the Board of Trustees in December. Projects in the programming or pre-design phase include: Agriculture/Science/Nursing Center, Library, Child Development Center, Animal Science Facilities, Water Reclamation Facility, Life Science/Natural Resources Management, and the Admissions/Counseling/Student Services Building.

The Administration Building/Lobby and the Exhibition/Events Center are in the bidding phase.

Three projects are under construction on the Pierce College campus: the Student Store/Student Support Center, perimeter project and Parking Lot 7.

Fall 2002

College Updates

LOS ANGELES SOUTHWEST COLLEGE

Proposition A Allocation: \$111 Million

The master planning effort and environmental impact report process are under way. Geotechnical investigations, required in advance of the environmental impact report, have now been completed, and the resulting data will be incorporated in the environmental impact report. Plans for renovating the Cox Building are being prepared. The Student Activities/Service Center has been designed, and plans and specifications have been approved by the Division of the State Architect.

Los Angeles Southwest College is investigating certain identified properties for potential acquisition in support of a comprehensive college master plan.

LOS ANGELES TRADE-TECHNICAL COLLEGE

Proposition A Allocation: \$138 Million

The final master plan has been submitted for review and comment by the public and is being prepared for presentation to the Board of Trustees. In support of the environmental impact report, a preliminary report encompassing traffic and parking issues has been drafted. Design consultants are being selected for renovation and modernization of several existing buildings. Two major buildings and a parking structure are planned for the most southern part of the campus.

Trade-Technical College is investigating additional nearby real properties for potential acquisition in support of a comprehensive college master plan, having already purchased an adjacent parcel.

LOS ANGELES VALLEY COLLEGE

Proposition A Allocation: \$165 Million

The master planning effort is under way, and several viable options are under review and discussion with the College and surrounding communities. Similarly, the environmental impact report is under way. Several projects are in the programming stage and include the Media Arts Center, Library/Learning Assistance Center, Allied Health/Sciences Building and the Gymnasium Complex. A design consultant has been selected for the Student Services Center/Administration Building. A design consultant has also been selected for the project to provide upgrades and refurbish restrooms in existing buildings.

WEST LOS ANGELES COLLEGE

Proposition A Allocation: \$111 Million

A draft of the master plan is being finalized and circulated for public comment. Selection of a design consultant to provide environmental impact report services has been made. Projects that are being programmed include: the Science and Math Building, Library/Learning Assistance Center, Student Services/Administration Building and General Classroom Building and Parking Structure. Studies to find ways of improving access to the campus are being prepared.

Fall 2002

Recent Progress

BOARD OF TRUSTEES APPROVES 'GREEN' BUILDING POLICY

In March 2002, demonstrating a strong commitment to a cleaner environment, the LACCD Board of Trustees adopted nationally recognized environmental standards for many of its new construction projects.

The decision encompasses projects funded by Proposition A, the \$1.2 billion bond measure that voters overwhelmingly approved in April 2001 to construct and modernize facilities at all nine LACCD campuses.

The Board worked with environmental supporters to arrive at a solution that balances cost considerations with the District's commitment to protect the environment. The result was board-approved policy guidelines using the pre-eminent Leadership in Energy & Environmental Design (LEED™) sustainable building standards administered nationally by the U.S. Green Building Council.

LACCD has been an environmental leader for years. The District has college-driven environmental programs, including a recycling program, energy-efficient air conditioning and lighting, and plans for distributed generation programs to produce clean power on site at some college campuses.

Under the LACCD's plan, all Proposition A new buildings will meet the LEED™ criteria for certification. The LACCD is also pursuing incentives offered by the State of California and local utilities to offset the cost of the new sustainable buildings, which will lower costs for gas, water and electricity.

LACCD is the first community college district in the country to adopt such a far-reaching sustainability policy. As part of this unique program, LACCD is planning to develop new academic programs to provide students with the opportunity to establish careers in sustainable building and design, solar energy, and sustainable landscaping and water systems.

With a Green Building policy in place, LACCD's Board of Trustees added renewable energy standards for the new construction and major renovation projects funded by Proposition A.

The LACCD's energy efficiency standards will result in a number of measures to ensure that buildings are using the most energy-efficient techniques available, such as insulated roofs with high thermal insulation values, glazed windows, energy-efficient lighting and energy-saving mechanical equipment.

To incorporate the use of renewable energy such as solar power, the LACCD will seek to use a combination of on-site generation of energy and the purchase of utility-generated "green power." At least 10 percent of the project's energy will be renewable energy generated on site.

Examples of methods to use renewable energy through on-site generation include the installation of photo-voltaic systems on a roof area or parking lot, wind turbines and geothermal systems. Other possibilities that are not renewable but are considered "green" sources of power (less polluting than fossil fuel power plants) are micro-turbines, fuel cells, co-generation systems and thermal storage systems.

Fall 2002

PROPOSITION A: IMPACT ON THE COMMUNITY

Warren Furutani, LACCD Board President, summarized the importance of the bond measure to the community:

“From the minute we learned the voters approved our \$1.2 billion bond measure to improve our campuses, our District has experienced a renewed energy and sense of purpose. Our new buildings are important primarily because they will offer our students the state-of-the-art science labs, theater arts, culinary and other academic programs that will help them become the next generation of Los Angeles leaders.”

With the selection of the Program Manager, College Project Managers, Master Planners, architects/engineers and specialty consultants, all nine colleges are proceeding with the design and construction of projects within their dollar allocation of the \$1.2 billion Proposition A bond measure.

Web Site

DMJM/JGM has developed a Web site to keep the community informed on the progress of Proposition A projects.

By locating the Los Angeles Community College District home page at www.laccd.edu and clicking on Proposition A, information about projects on each campus can be viewed.

The Proposition A Web page also includes information regarding business contacts, upcoming requests for qualifications, construction bid requests and recent events.



Fall 2002

Program Management

DMJM/JGM provides overall management services for Proposition A projects. Their staffing includes finance and accounting, program controls, management information systems, contracts, economic outreach, pre-construction services and construction services.

The Solis Group is a sub-consulting firm responsible for economic outreach and labor compliance.

DMJM/JGM supervises the work of the College Project Managers and reports to the District Executive Director of Facilities Planning and Development.

The College Project Managers initiate requests for contracts and provide direct supervision for construction projects.

Auditing Services

KPMG was approved by the Board of Trustees to provide performance and financial auditing services for Proposition A projects.

The firm provides such services as comparing costs of program management with industry norms, documenting progress regarding cost savings strategies, evaluating the effectiveness of management practices and suggesting processes for improving performance.

Included in their audit report will be progress reports, schedules, budget versus actual reports and other information associated with the management of the Proposition A program. The firm will also evaluate the economic outreach efforts and monitor compliance with the Project Labor Agreement.

College Project Managers

Los Angeles City College

Allyson Gipson

Bovis Lend Lease, Inc.
11755 Wilshire Blvd., Suite 2450
Los Angeles, CA 90025

East Los Angeles College

Mark Edwards

Jacobs Facilities, Inc.
5757 Plaza Dr., Suite 100
Cypress, CA 90630

Los Angeles Harbor College

Bruce Risley

Pinnacle One
515 South Flower St., Suite 3510
Los Angeles, CA 90071

Los Angeles Mission College

Ana Rojas

Gateway Science & Engineering
300 North Lake Ave., Suite 520
Pasadena, CA 91101

Los Angeles Pierce College

Dasol Mashaka

Swinerton Management & Consulting
865 South Figueroa St., Suite 2690
Los Angeles, CA 90017

Los Angeles Southwest College

Don Dixon

The JCM Group
6420 Wilshire Blvd.
Los Angeles, CA 90048

Los Angeles Trade-Technical College

Tony Gonzales

ACG+AVA
1750 14th St., Suite C
Santa Monica, CA 90404

Los Angeles Valley College

Fred Parker

URS Construction Services
911 Wilshire Blvd., Suite 1800
Los Angeles, CA 90017

West Los Angeles College

Ron Clement

Turner Construction Company
555 West Fifth St., Suite 3700
Los Angeles, CA 90013

The College Project Managers were recently selected through an exhaustive process. Thirty-five management firms responded to the request for qualifications. The firms listed above were selected by the respective colleges and approved by the Board of Trustees.

Fall 2002

Proposition A At-A-Glance

- Proposition A is a \$1.2 billion facilities bond to construct new buildings and modernize existing facilities on all nine of the Los Angeles Community College District's campuses.
- Proposition A was approved by 67 percent of the electorate in April 2001, surpassing the 55 percent approval needed to win.
- The District has established a goal of completing programming, design and construction totaling \$466 million in the first 36 months.

Fast Facts About the LACCD

DID YOU KNOW?

The nine colleges of the LACCD educate more than 130,000 students per year!

DID YOU KNOW?

Sixty percent of the students who graduate from the California State University (CSU) systems have attended a community college!

DID YOU KNOW?

LACCD educates almost three times as many Latino students and nearly four times as many African-American students as all of the University of California system campuses combined!

DID YOU KNOW?

State funding for community colleges is less than one-half of what California State Universities and one-third of what the University of California system receives for instruction-related services per full-time student!

DID YOU KNOW?

The nine colleges offer educational opportunities in more than 100 cities and communities covering an area of more than 882 square miles!

Cities and Communities Served

Agoura · Agoura Hills · Alhambra · Baldwin Hills · Bel Air Estates · Bell · Bell Gardens · Beverly Hills · Boyle Heights · Brentwood · Burbank · Calabasas · Canoga Park · Carson · Chatsworth · City of Commerce · Cudahy · Culver City · Eagle Rock · Encino · Gardena · Granada Hills · Hancock Park · Harbor City · Hidden Hills · Highland Park · Hollywood · Huntington Park · Lomita · Los Angeles · Lynwood · Marina del Rey · Maywood · Miracle Mile · Mission Hills · Montebello · Monterey Park · North Hills · North Hollywood · Northridge · Pacific Palisades · Pacoima · Palos Verdes Estates · Panorama City · Playa del Rey · Porter Ranch · Rancho Palos Verdes · Reseda · Rolling Hills · Rolling Hills Estates · San Fernando · San Gabriel · San Pedro · Sherman Oaks · Silver Lake · South Gate · Studio City · Sun Valley · Sunland · Sylmar · Tarzana · Toluca Lake · Universal City · Valley Glen · Valley Village · Van Nuys · Venice · Vernon · Watts · West Hills · West Hollywood · Westchester · Westwood · Wilmington · Winnetka · Woodland Hills